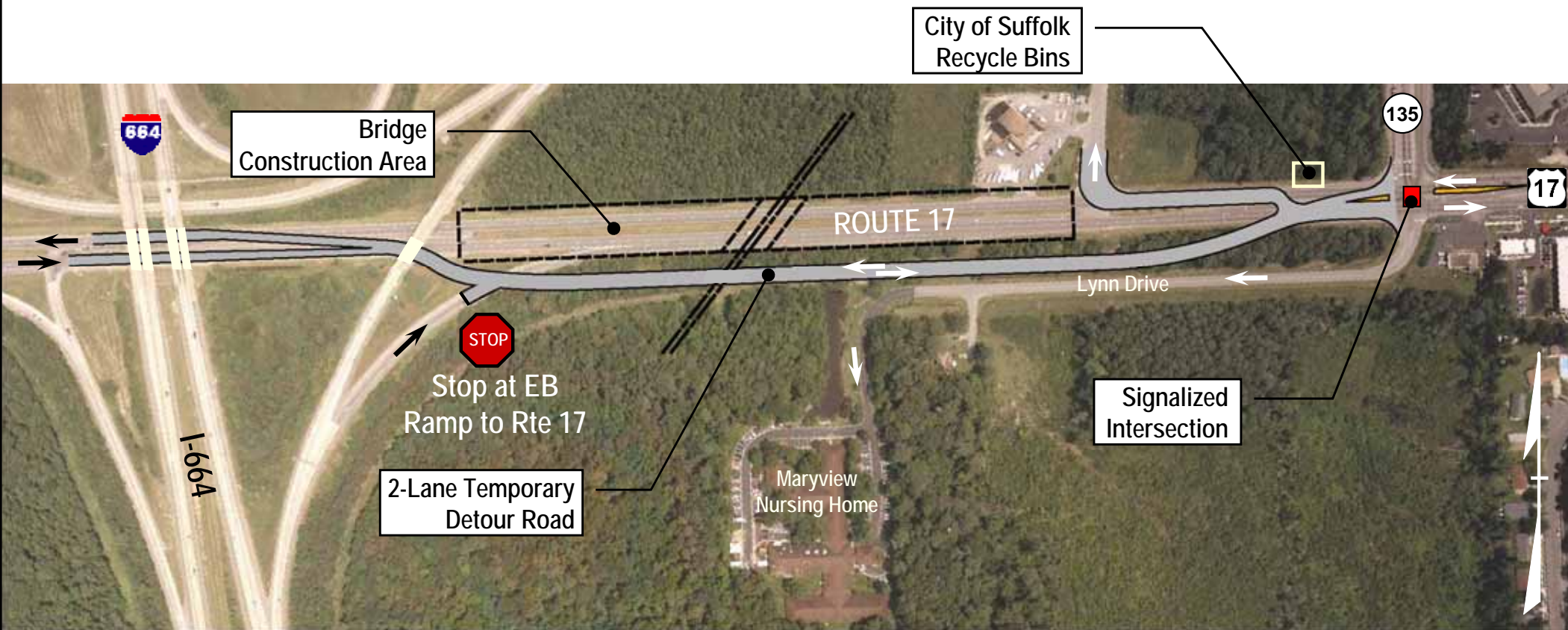


New Highway 17 Bridge – Temporary MOT

■ Temporary Maintenance of Traffic During Construction

- Two Lane Detour (1-Eastbound & 1-Westbound Lane)
- Access Maintained to Existing Businesses



THE Port of VIRGINIA

Commonwealth Railway Mainline Safety Relocation Project (CRMSRP)